

## JENNY SMITH ELEMENTARY SCHOOL





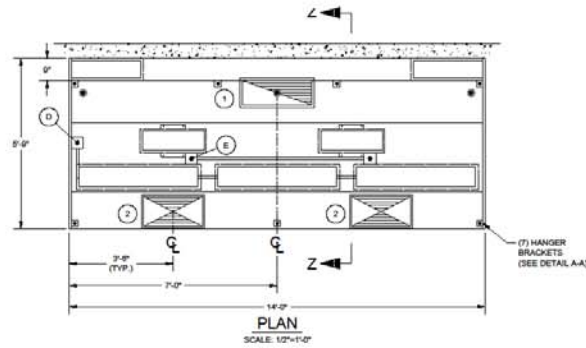
K.E.C. MUST VERIFY THE EXACT DIMENSION OF THE COOKING EQUIPMENT FROM EITHER THE WALL OR FROM THE FRONT OF THE HOOD, SO CADDY MAY PROPERLY LOCATE THE FIRE PROTECTION NOZZLES AT TIME-OF-FABRICATION IN THE FACTORY. IF EQUIPMENT IS NOT LOCATED AS SHOWN AND THE DRAWING IS APPROVED FOR FABRICATION, THEN NOZZLES MUST BE RELOCATED AT THE EXPENSE OF OTHERS.

**CONTRACTOR NOTE:**  
ALLOW SUFFICIENT ACCESS ON TOP OF VENTILATOR TO SERVICE COMPONENTS AND UTILITIES

**MAKE-UP AIR NOTE:**  
AIR TEMPERATURE SHOULD RANGE FROM 60° TO 65° F, BUT MAY BE AS LOW AS 50° F DEPENDING ON AIR VOLUME, DISTRIBUTION, AND INTERNAL HEAT LOAD

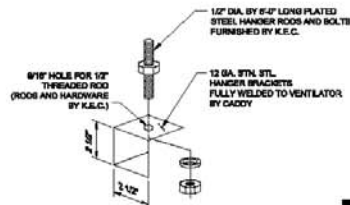
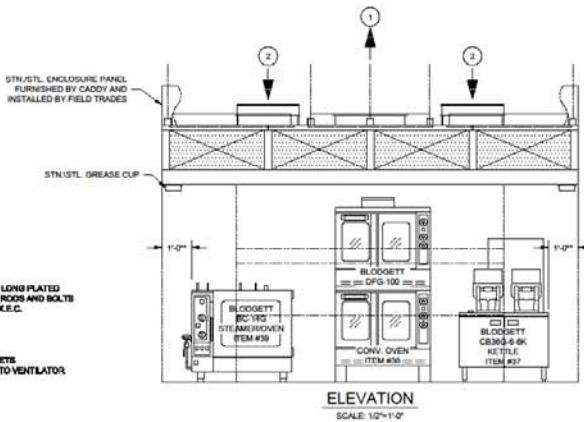
**THE CADDY VENTILATOR TESTING, LISTING AND APPROVAL REFERENCES:**

- NATIONAL FIRE PROTECTION ASSOCIATION  
In accordance with Recommendation of National Fire Protection Association's NFPA No. 96 "Vapor Removal from Cooking Equipment"
- NATIONAL SANITATION FOUNDATION  
Standard #2 - "Food Service Equipment"
- UNDERWRITERS LABORATORIES, INC  
Tested under standard U.L. 710 "Exhaust Hoods for Commercial Cooking Equipment". U.L. listed under file number MH12667
- UNIFORM MECHANICAL CODE  
Section 507 - Commercial Kitchen Hoods and Kitchen Ventilation Systems
- THE BOCA NATIONAL MECHANICAL CODE  
Chapter 5 - Kitchen Exhaust Equipment
- STANDARD MECHANICAL CODE (SBC/C)
- Section 504 - Commercial Hoods
- UNIFORM BUILDING CODE (UBCO)
- INTERNATIONAL MECHANICAL CODE (IMC)



TOTAL EXHAUST: 3,500 C.F.M.  
TOTAL SUPPLY: 2,800 C.F.M.

- 1 10" X 26" EXHAUST DUCT 3,500 C.F.M. EACH @ 1.30" S.P.
- 2 12" X 24" SUPPLY DUCTS 1,400 C.F.M. EACH @ 0.20" S.P.



**HANGER BRACKET DETAIL A-A**  
SCALE: 1/4"=1"

K.E.C. TO VERIFY ALL MAKES AND MODELS OF COOKING EQUIPMENT, REVIEW PLAN FOR PROPER LINE-UP PRIOR TO FABRICATION OF VENTILATORS, AND TO NOTIFY CADDY OF ANY CHANGES.

\* - MINIMUM OVERHANG FROM EDGE OF COOKING EQUIPMENT TO END OF HOOD MUST BE 6"

**INSTALLATION INFORMATION**

ALLOW SUFFICIENT ACCESS TO BRING VENTILATOR INTO KITCHEN AREA. MAXIMUM VENTILATOR DIMENSIONS: 14'-0" LONG x 5'-6" WIDE x 32 1/2" HIGH. ESTIMATED TOTAL HANGING WEIGHT: 1,150 LBS.

VENTILATOR TO BE SHIPPED IN (1) UNIT. ALL PLUMBING AND ELECTRICAL DISCONNECTED FOR SHIPMENT. RECONNECTED IN FIELD BY PLUMBING AND ELECTRICAL CONTRACTORS.

**ELECTRICAL NOTES:**

- LIGHT FIXTURES, VAPORPROOF, U.L. LISTED, FURNISHED, INSTALLED AND WIRED TO BOX (3) BY CADDY. DISCONNECTED FOR SHIPPING AT EACH JUNCTION (2). RECONNECTED ON JOBSITE BY ELECTRICAL CONTRACTOR.
- LIGHT SWITCH FOR LIGHT FIXTURE WITH 120 VOLTS A.C. SERVICE BY CADDY. SWITCH LOCATED IN UDS RISER ITEM # 35.
- UVC LIGHT CONTROL BOX FURNISHED AND INSTALLED BY CADDY. 120V SUPPLY AND INTERLOCK WIRING TO EACH JUNCTION BOX (2) BY ELECTRICAL CONTRACTOR.

**GENERAL NOTES**

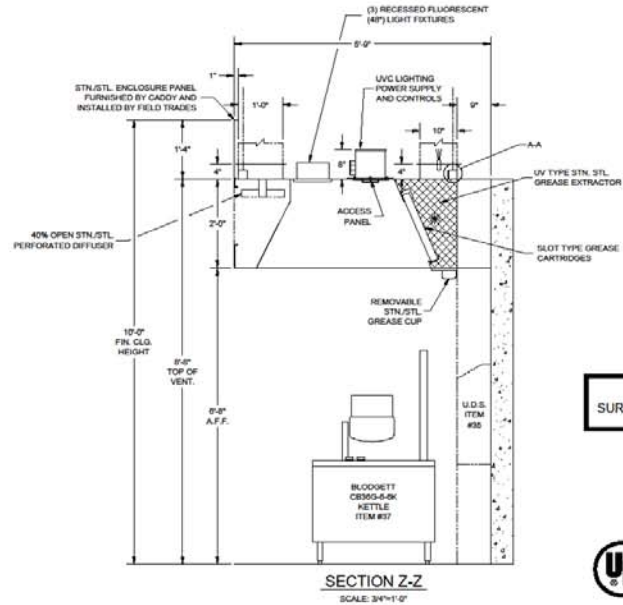
- EXHAUST AIR REQUIREMENTS:**
- EXHAUST C.F.M. BASED ON 280 C.F.M. PER LINEAR FOOT.
  - EXHAUST STATIC PRESSURE IS 1.30" W.G. AT DUCT TAKE-OFF COLLAR. TOTAL DUCT STATIC MUST BE ADDED. STATIC BASED ON OPERATION AT MEAN SEA LEVEL.
  - DUCT SIZE BASED ON 1000 F.T.M.
- EXHAUST FAN REQUIREMENTS:**
- TYPE - RECESSED DRAFT, SCREWED GAUGE, BACKWARD INCLINED BLADES. EXHAUST FAN DISCHARGE SHOULD BE VERTICAL, AWAY FROM AIR INTAKES. FAN FURNISHED BY OTHERS.
  - EXHAUST FAN MUST BE FURNISHED WITH A MAGNETIC STARTER WITH 120 VOLT HOLDING COIL. STARTER FURNISHED BY OTHERS.

- MAKE-UP AIR REQUIREMENTS:**
- AIR EXHAUSTED FROM KITCHEN MUST BE REPLACED, WITH DISTRIBUTION CONTROLLED TO PROVIDE FOR TOTAL KITCHEN VENTILATION AND TO ESTABLISH NECESSARY AIR PATTERNS FOR PROPER PERFORMANCE OF THE VENTILATORS. AIR DISTRIBUTION SYSTEMS SHALL BE IN ACCORDANCE WITH ALL GOVERNING CODES.
  - MAKE-UP AIR MUST BE TEMPERED HEATED OR COOLED, CONSISTENT WITH THE STYLE OF HOOD, HEAT LOAD, CLIMATIC CONDITIONS AND APPLICABLE CODES.

- INSTALLATION:**
- VENTILATORS TO BE INSTALLED IN ACCORDANCE WITH ALL CODES. CONTRACTORS MUST REVIEW APPLICABLE CODES WITH CODE AUTHORITIES BEFORE APPROVING DRAWINGS OR FABRICATION. SPECIAL ATTENTION MUST BE GIVEN TO CODE REGULATIONS RELATIVE TO CLEARANCES FROM SURROUNDING COMBUSTIBLE CONSTRUCTION (WALL, CEILING, ETC.).
  - ALL DUCTWORK BEYOND VENTILATOR DUCT TAKE-OFF COLLAR TO BE PROVIDED AND INSTALLED BY OTHERS, IN ACCORDANCE WITH JURISDICTIONAL CODES. DUCTS MUST BE MECHANICALLY STRONG, GREASE AND WATER TIGHT.
  - MOUNTING RODS FURNISHED AND INSTALLED BY OTHERS.

- CONSTRUCTION:**
- VENTILATORS TO BE MANUFACTURED IN STRICT ACCORDANCE WITH CADDY SPECIFICATIONS.
  - VENTILATORS CONSTRUCTED OF 16 GA. STAINLESS STEEL.
- FIRE PROTECTION:**
- SURFACE FIRE PROTECTION PROVIDED AND INSTALLED BY K.E.C. (PRE-PIPING FOR ANGL. R-102 ONLY BY CADDY).
  - CAUTION: SURFACE FIRE PROTECTION SYSTEM INSTALLATION MUST BE COORDINATED WITH CADDY TO PREVENT SYSTEM INTERFERENCE WITH VENTILATOR'S OPERATION/PERFORMANCE. IMPROPER INSTALLATION MAY VOID U.L. LISTINGS OF THE EQUIPMENT.
  - IMPORTANT NOTE: NFPA 96 REQUIRES THAT ALL GAS AND ELECTRIC COOKING EQUIPMENT THAT IS PROTECTED BY A SURFACE FIRE PROTECTION SYSTEM MUST AUTOMATICALLY

- ELECTRICAL REQUIREMENTS:**
- LIGHT FIXTURE BULBS PROVIDED AND INSTALLED BY OTHERS.



PRE-PIPING ONLY BY CADDY  
SURFACE NOZZLE DROPS NOT INCLUDED



**ROUGH-IN SCHEDULE**

SYM	QTY	DESCRIPTION
D	1	120V, 60HZ, 1PH, 0.24 K.W. CONNECTED LOAD
E	1	120V, 60HZ, 1PH, 1.44 K.W. CONNECTED LOAD

**REVISIONS**

REV	DATE	BY	REVISIONS
A	1-18-06	SGP	FABRICATED PER APPROVED DRAWINGS

**CADDY AirSystems**  
300 SHARPTOWN ROAD  
P.O. BOX 3468 BRIDGEPORT NJ 08014  
Tel (856) 487-4223 Fax (856) 487-6611

**EQUIPMENT SCHEDULE**

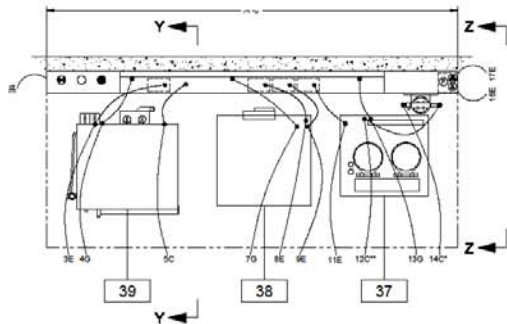
SHBCU-C-W-PA-168-ND-69

CADDY NO. 1952-4 ITEM NO. 34

JOB: JENNIE SMITH ELEM. SCHOOL  
LOC. NEWARK, DE  
CUST: ESSBAR EQUIPMENT CO.  
CUST# 4584

DWG# D-1-1952

**GENERAL CONTRACT CONDITIONS**  
ELECTRICAL WORK DONE BY CADDY CORPORATION IS INSTALLED IN COMPLIANCE WITH STANDARDS PUBLISHED BY THE UNDERWRITERS LABORATORIES, INC. INsofar AS APPLICABLE, AND THE LATEST EDITION OF THE NATIONAL ELECTRICAL CODE (N.E.C.) CADDY CORPORATION DOES NOT ACCEPT ANY RESPONSIBILITY FOR THE REQUIREMENTS OF ANY REGIONAL AND/OR LOCAL CODES THAT ADD OR DEVIATE FROM THE ACCEPTED STANDARDS OF THE ABOVE AGENCIES. ANY FIELD WORK RELATING TO THE MODIFICATION OF ELECTRICAL OR PLUMBING SYSTEMS, TO MEET REGIONAL OR LOCAL CODE REQUIREMENTS IS TO BE DONE BY OTHERS AND WITHOUT BACK CHARGES TO CADDY CORPORATION. UNLESS THESE CONDITIONS BE BROUGHT TO OUR ATTENTION AND ARE EXPRESSLY INCLUDED IN OUR WRITTEN QUOTATION. ALL WIRING AND PLUMBING AT THE JOB SITE IS THE RESPONSIBILITY OF OTHERS. EQUIPMENT WILL BE CONTRACTED IN ACCORDANCE WITH OUR DRAWINGS WHICH MUST BE APPROVED PRIOR TO FABRICATION. ANY SUBSEQUENT CHANGES REQUIRED MUST BE SUBMITTED TO US IN WRITING AND ACKNOWLEDGED ON OUR STANDARD FORM.

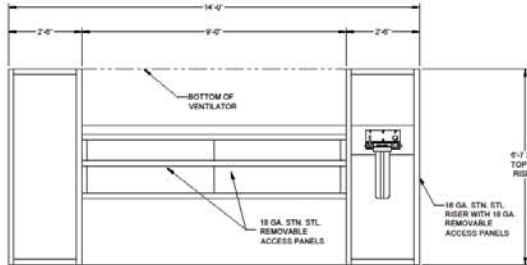


PLAN VIEW  
SCALE: 1/2" = 1'-0"

WATER FILTER MODEL #BWG-12K TO BE FURNISHED BY K.E.C. AND INSTALLED BY CADDY AT TIME OF UDS MANUFACTURE.

\* - WATER FILTER MODEL #BWG-12K TO BE HARD CONNECTED TO THE U.D.S. AT TIME OF UDS MANUFACTURING.

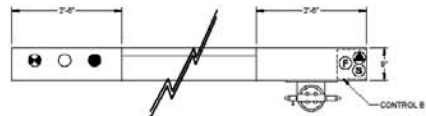
\*\* - WATER FILTER MODEL #BWG-12K TO BE HARD CONNECTED TO KETTLE BY K.E.C. AT TIME OF UDS INSTALLATION.



ELEVATION VIEW  
SCALE: 1/2" = 1'-0"

**CODE COMPLIANCE**

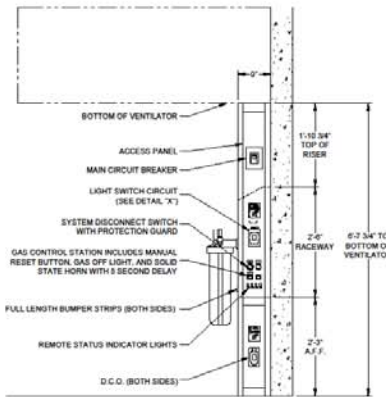
THE UTILITY DISTRIBUTION SYSTEM SHALL BE U.L. LISTED UNDER THE CATEGORY "UTILITY DISTRIBUTION SYSTEM" AND MANUFACTURED IN ACCORDANCE WITH THE NATIONAL ELECTRICAL CODE (NEC), NATIONAL ELECTRICAL MANUFACTURERS ASSOCIATION'S (NEMA), NATIONAL FIRE PROTECTION ASSOCIATION (NFPA) PAMPHLET NUMBER 96 AND 54, UNIFORM PLUMBING CODE (UPC), AMERICAN SOCIETY OF MECHANICAL ENGINEERS (ASME), NATIONAL SANITATION FOUNDATION (NSF), AND OCCUPATIONAL SAFETY AND HEALTH ADMINISTRATION (OSHA) USING ONLY U.L. LISTED, BUREAU OF MINES RATES, ACGA CERTIFIED AND CGA CERTIFIED COMPONENTS.



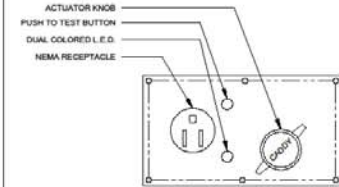
RISER DETAIL  
SCALE: 3/4" = 1'-0"

ALL UTILITIES INCLUDE 25% OVER-CAPACITY FOR FUTURE EXPANSION

NOTE: MAIN CIRCUIT BREAKER FURNISHED AND INSTALLED BY CADDY.

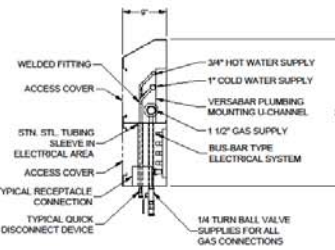
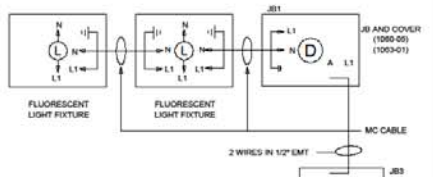


END VIEW Z-Z  
SCALE: 3/4" = 1'-0"



TYPICAL CADDY CONNECTION PLATE

HOUSING POINT OF USE CIRCUIT BREAKER INCLUDES DUAL COLORED L.E.D., ACTUATOR KNOB, NEMA RECEPTACLE AND G.F.C.I. CIRCUIT. SHALL BE 6" x 6" AND MOUNTED AS SHOWN. (RECEPTACLE COVER NOT SHOWN)



DETAIL "X"

SECTION Y-Y  
SCALE: 1" = 1'-0"



**NOTES**

1. THIS UNIT IS TO BE SHIPPED IN ONE (1) PIECE AS SHOWN IN PLAN VIEW. ( ) VERIFY FOR ENTRANCE INTO BUILDING AND UNIT AREA.
2. ( ) VERIFY IF ROUGH-IN SCHEDULE.
3. NAT'L SANITATION FOUNDATION STANDARD 42-"FOOD SERVICE EQUIPMENT" UNIFORM BUILDING CODE (UBC); UNDERWRITERS LAB INC., U.L. LISTED UNDER FILE #E20096.
4. ALL "VERIFIED" ON THIS DRAWING MUST BE CONFIRMED. YOUR FABRICATION APPROVAL SHALL INDICATE YOUR ACCEPTANCE AS SHOWN.
5. ELECTRICAL CONTRACTOR MUST ROUGH-IN UP TO THE BUS-BAR CONNECTION LUGS. APPROXIMATE 3/4" A.F.F.

**ROUGH-IN SCHEDULE**

SYM	QTY	DESCRIPTION	PLEASE SPECIFY
			CEILING FLOOR OTHER
⊕	1	120/240V, 20L, 20A, 50 AMP'S	
⊕	1	1/2" GAS SUPPLY 656 MBH	
⊕	1	3/4" HOT WATER SUPPLY	
⊕	1	1" COLD WATER SUPPLY	
⊕	1	FIRE FUEL SHUT-OFF SEE DETAIL	
⊕	1	VENT. LIGHT SWITCH	

**REVISIONS**

REV	DATE	BY	REVISION
A	07/20/05	ADG	REVISED PER APPROVED CHANGE

**CADDY AirSystems**

505 SHARPTOWN ROAD  
P.O. BOX 345 BRIDGEPORT NJ 08014  
TEL: (609) 467-4222 FAX: (609) 467-6511

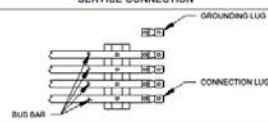
**EQUIPMENT SCHEDULE**

UTILITY DISTRIBUTION SYSTEM  
MODEL: CA-WL-EQW-014  
14'-0" LONG

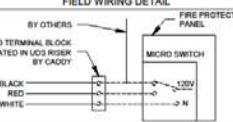
CADDY NO. 1952-3 ITEM NO. 35

JOB: JENNIS SMITH ELEM. SCHOOL  
LOC. NEWARK, DE  
CUST. ESSBAR EQUIPMENT CO.  
CUST#: 4984

**TYPICAL ELECTRICAL SERVICE CONNECTION**



**FIRE-FUEL SHUT-OFF FIELD WIRING DETAIL**



**ORIGINAL CONTRACTOR'S OBLIGATION**  
ELECTRICAL WORK DONE BY CADDY CORPORATION IS SUBJECT TO COMPLIANCE WITH ALL APPLICABLE NATIONAL, STATE AND LOCAL ELECTRICAL CODES, ORDINANCES, REGULATIONS, AND THE LATEST EDITION OF THE NATIONAL ELECTRICAL CODE BOOK. CADDY CORPORATION DOES NOT ACCEPT ANY RESPONSIBILITY FOR THE NEGLIGENCE OF ANY PERSONAL, AGENCY OR FIELD WORK RELATIVE TO THE SPECIFICATION OF ELECTRICAL OR PLUMBING SYSTEMS, TO MEET NATIONAL OR LOCAL CODE REQUIREMENTS IS TO BE DONE BY OTHERS AND WITHOUT BEING OBLIGED TO CADDY CORPORATION. CADDY CORPORATION WILL BE RESPONSIBLE TO CALIFORNIA ATTENTION AND USE CONFORMS TO OUR WRITTEN QUOTE.

**ALL WIRING AND PLUMBING AT THE JOB SITE IS THE RESPONSIBILITY OF OTHERS. EQUIPMENT WILL BE CONTACTED TO BE ACCORDANCE WITH OUR COMPANY'S POLICY MUST BE APPROVED PRIOR TO FABRICATION. ANY NECESSARY CHANGES REQUIRED MUST BE SUBMITTED TO US IN WRITING AND APPROVED PRIOR TO OUR FABRICATION.**





