

CF-10-TL CONVEYOR IS DESIGNED TO TRANSPORT UP TO 11" DIA. PLATES, CUPS, AND CUTLERY.

- NOTES**
- CONVEYOR IS TO BE E.T.L. LISTED WITH LABEL AFFIXED.
 - CONVEYOR WILL BE SHIPPED IN (4) PIECES. WINDOW BUCK WILL BE SHIPPED IN (2) PIECES, AND SIGHT & SOUND BAFFLE WILL BE SHIPPED IN (1) PIECE AS INDICATED IN THE PLAN VIEW UNLESS OTHERWISE REQUESTED.
 - CF-10 CONVEYOR IS DESIGNED TO TRANSPORT UP TO 11" DIA. PLATES, CUPS, AND CUTLERY. SPECIFY SIZE & MAKE OF PLATE.
 - CF-10 CONTROL STATION INCLUDES CONVEYOR START/STOP SWITCH & VARIABLE SPEED CONTROL AND BELT WASHER ON/OFF SWITCH.
 - BELT WASHER OPERATES AUTOMATICALLY WHILE CONVEYOR "START" AND BELT WASHER "ON" BUTTONS ARE DEPRESSED. BELT WASHER INCLUDES ON/OFF SWITCH AND "ON" INDICATOR LIGHT.
 - PULPER TO BE SOMAT #UDTC.
 - REMOVABLE STN. STL. PANELS TO BE DOUBLE PAN TYPE. FRONT OF PANELS TO HAVE 1" BORDER AROUND A DECORATIVE STN. STL. INSERT. PANELS TO CONTAIN 3/4" POLYURETHANE FOAM INSULATION. DECORATIVE INSERT TO BE RIGIDIZED METAL #5HR. .060" (16 GAUGE).

ROUGH-IN SCHEDULE		
NOTE: STUB UP FLOOR ROUGH-INS 4" A.F.F. ROUGH-INS EXTENDING FROM WALLS TO BE 10" A.F.F.		
SYM	QTY	DESCRIPTION
A	3	1 1/2" I.P.S. WASTE
B	1	120V., 60HZ., 1PH., 1 HP., 15 AMPS.
C	1	1/2" I.P.S. HOT WATER
D	1	1/2" I.P.S. COLD WATER
E	1	1/2" I.P.S. DIFFUSER 7/8" DIA. HOLE BY CADDY FISHER WATER INLET #2905
F	1	1/2" I.P.S. GUSHERHEAD 7/8" DIA. HOLE BY CADDY FISHER GUSHER HEAD #2906
G	1	120V., 60HZ., 1PH., 15AMPS LIGHTS FOR SIGHT AND SOUND BAFFLE

REVISIONS			
REV	DATE	BY	REMARKS
A	12/18/14	DME	CHANGED LIGHTS TO BE LED AND ADDED TRASH CHUTES AND LAMINATED PANELS.
B	02/10/15	DME	CHANGED WINDOW BUCK TO TELESCOPING & ADDED WINDOW BUCK DETAIL PER KEN IVERSEN.
C	06/09/15	MED	REVISED PER PURCHASE ORDER.
D	06/16/15	DME	REVISED PER CADDY FIELD DIMENSIONS AND SITE VISIT.
E	07/06/15	DME	REVISED PER "APPROVED AS NOTED" DRAWING FOR FABRICATION.

CADDY CORPORATION
 509 SHARPTOWN ROAD, P.O. BOX 345
 BRIDGEPORT, NJ 08014
 TEL: (856) 467-4222 FAX: (856) 467-5511
 WWW.CADDYCORP.COM

EQUIPMENT SCHEDULE

CF-10-TL SOILED WARES CONVEYOR (TRAY-LESS)

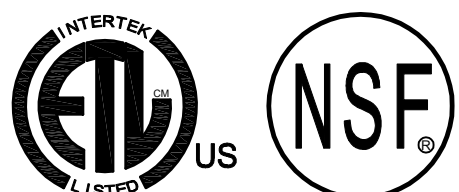
CADDY NO. 13341-1 ITEM NO. 1

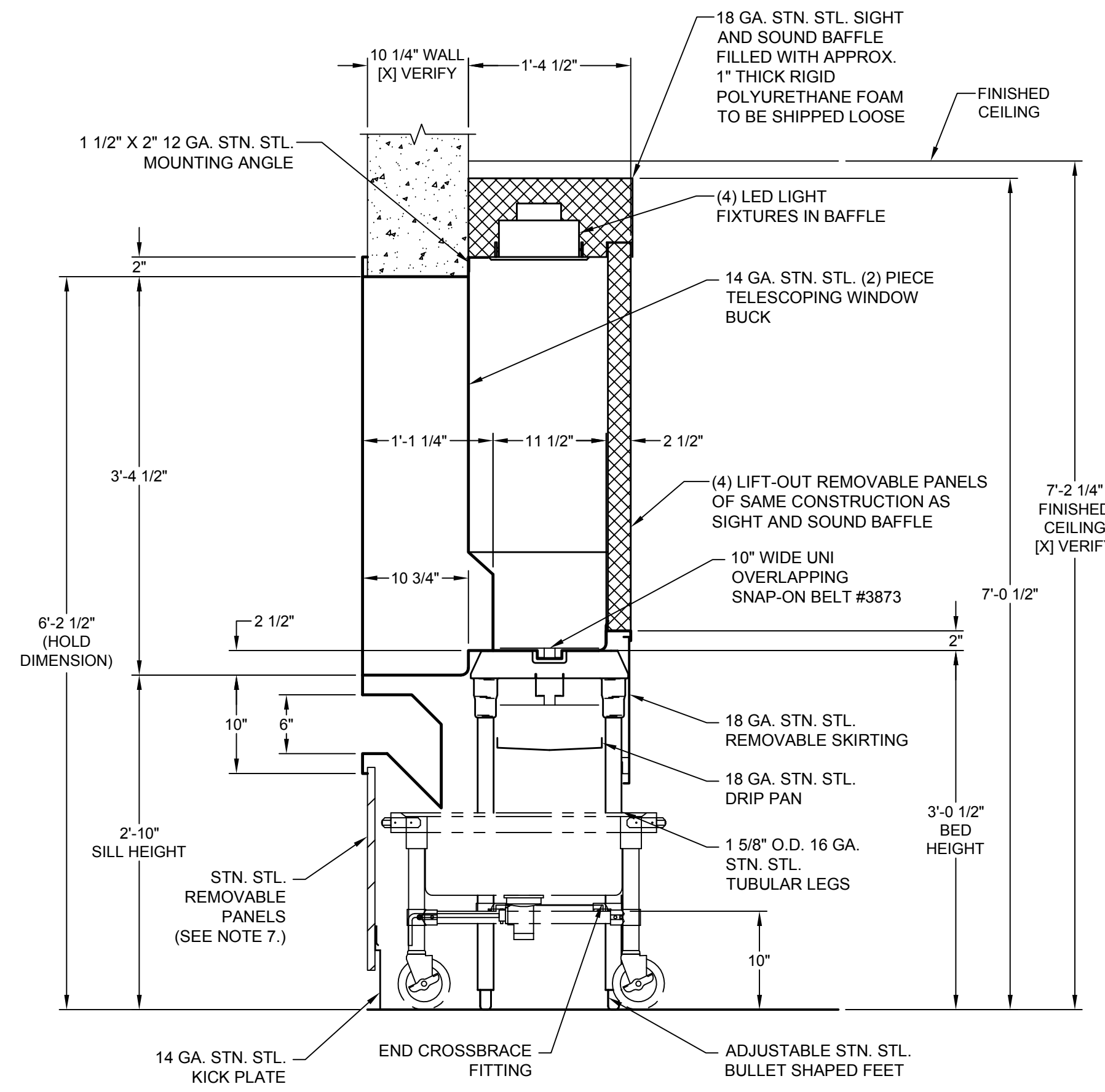
JOB: RUTGERS UNIVERSITY - BROWER
 LOC: NEW BRUNSWICK, NJ
 CUST: PENN JERSEY PAPER COMPANY
 CUST # 446178

DATE: 12/04/14 SCALE: AS NOTED
 DR BY: DME APP'D BY: *BJM*

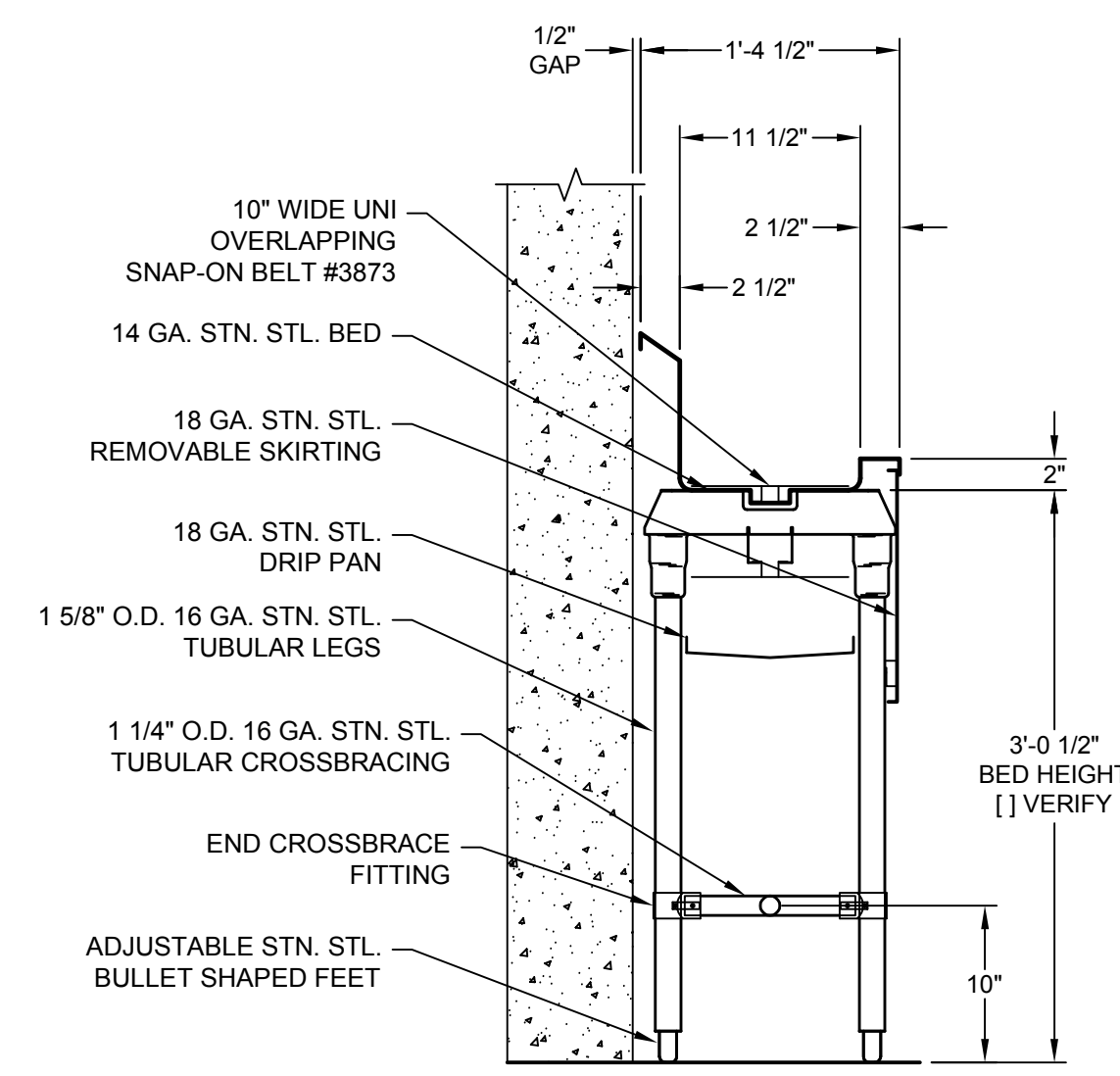
DWG# D-1-19734 SHT 1 OF 2

GENERAL CONTRACT CONDITIONS
 ELECTRICAL WORK DONE BY CADDY CORPORATION IS EXECUTED IN COMPLIANCE WITH STANDARDS PUBLISHED BY THE UNDERWRITERS LABORATORIES, INC. INsofar AS APPLICABLE, AND THE LATEST EDITION OF THE NATIONAL ELECTRICAL CODE (NEC). CADDY CORPORATION DOES NOT ACCEPT ANY RESPONSIBILITY FOR THE REQUIREMENTS OF ANY REGIONAL AND/OR LOCAL CODES THAT ADD OR DEVIATE FROM THE ACCEPTED STANDARDS OF THE ABOVE AGENCIES. ANY FIELD WORK RELATING TO THE MODIFICATION OF ELECTRIC OR PLUMBING SYSTEMS, TO MEET REGIONAL OR LOCAL CODE REQUIREMENTS IS TO BE DONE BY OTHERS AND WITHOUT BACK CHARGES TO CADDY CORPORATION. UNLESS THESE CONDITIONS WERE PREVIOUSLY BROUGHT TO OUR ATTENTION AND ARE EXPRESSLY INCLUDED IN OUR WRITTEN QUOTATION.
 ALL WIRING AND PLUMBING AT THE JOB SITE IS THE RESPONSIBILITY OF OTHERS. EQUIPMENT WILL BE CONSTRUCTED IN ACCORDANCE WITH OUR DRAWING(S) WHICH MUST BE APPROVED PRIOR TO FABRICATION. ANY SUBSEQUENT CHANGES REQUIRED MUST BE SUBMITTED TO US IN WRITING AND ACKNOWLEDGED ON OUR STANDARD FORM.

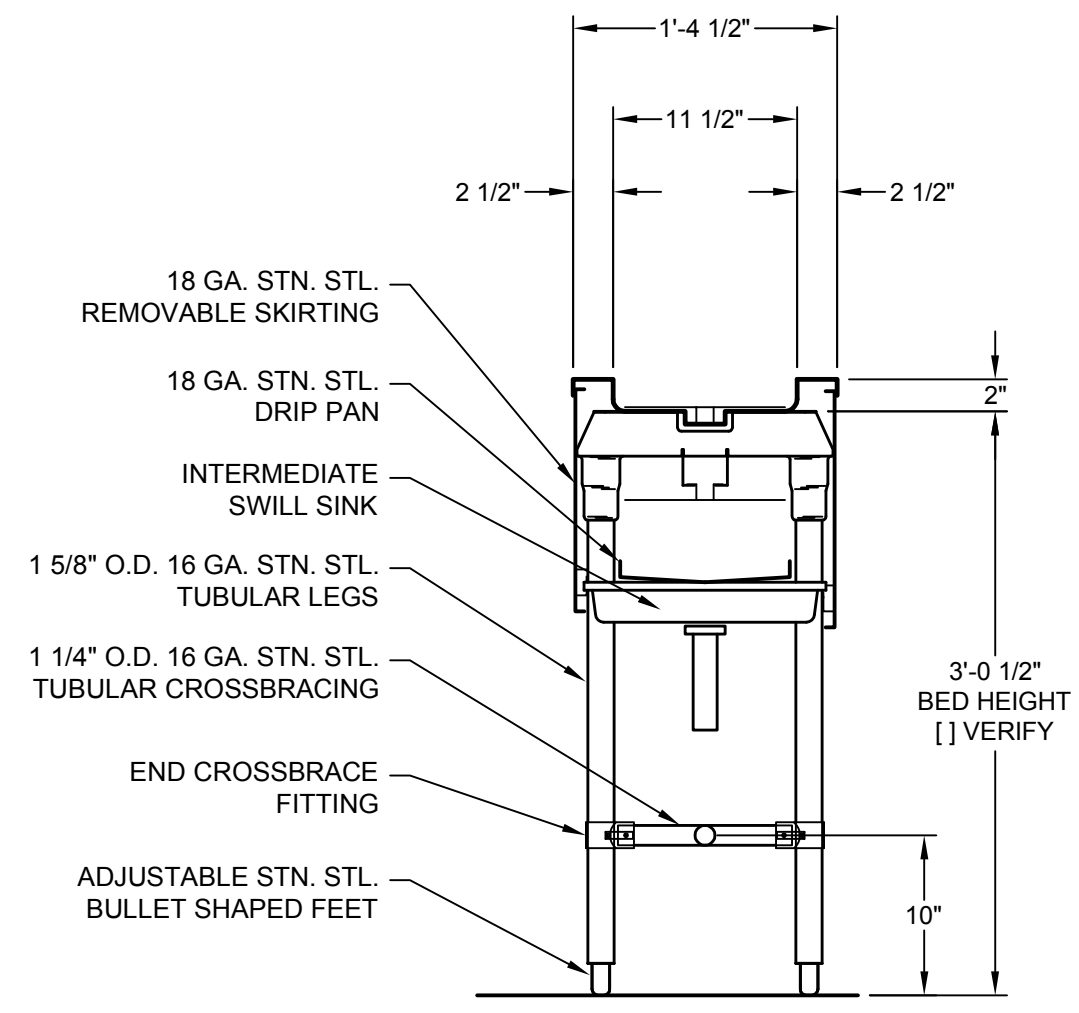




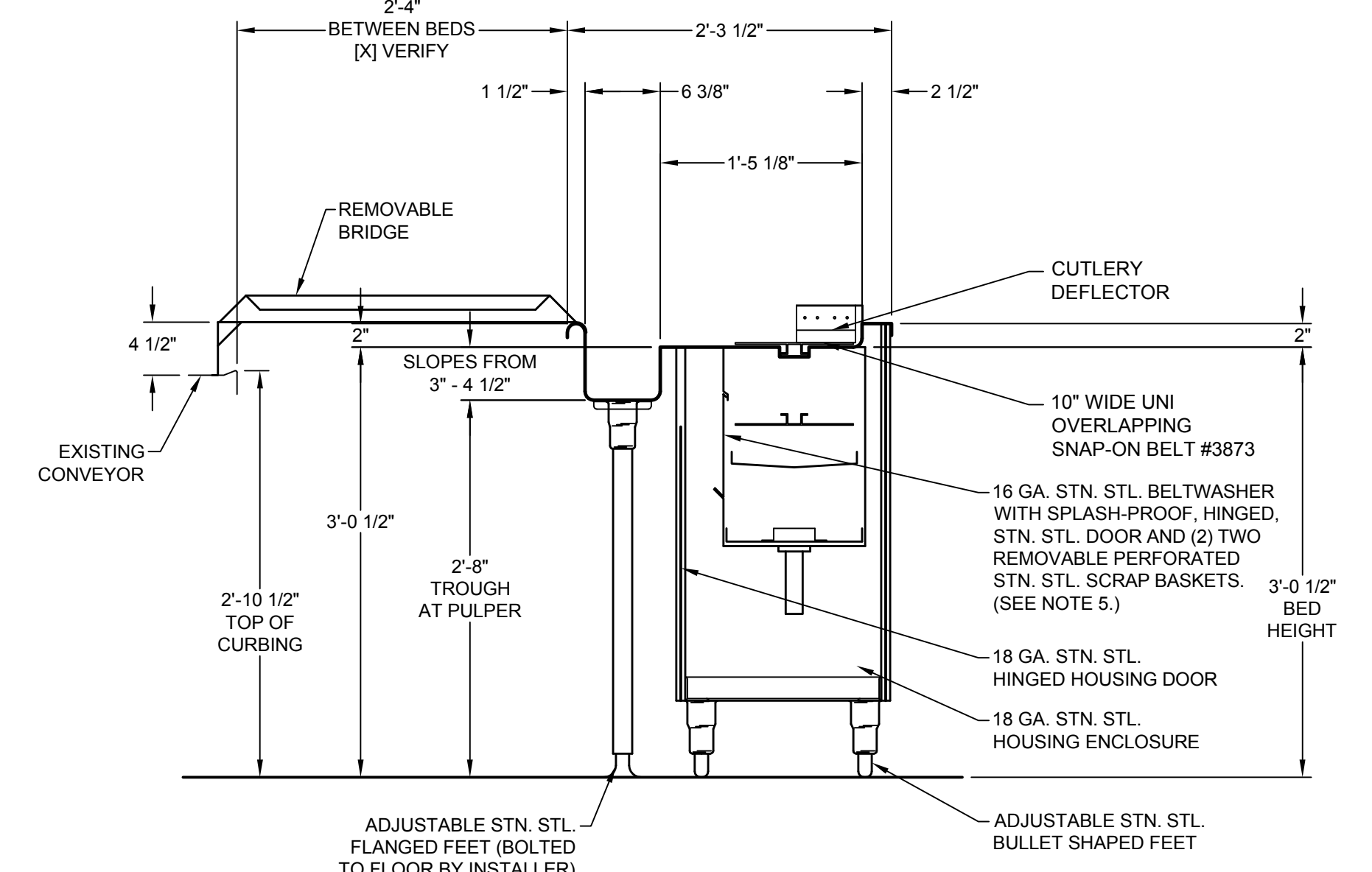
SECTION W-W
SCALE: 1" = 1'-0"



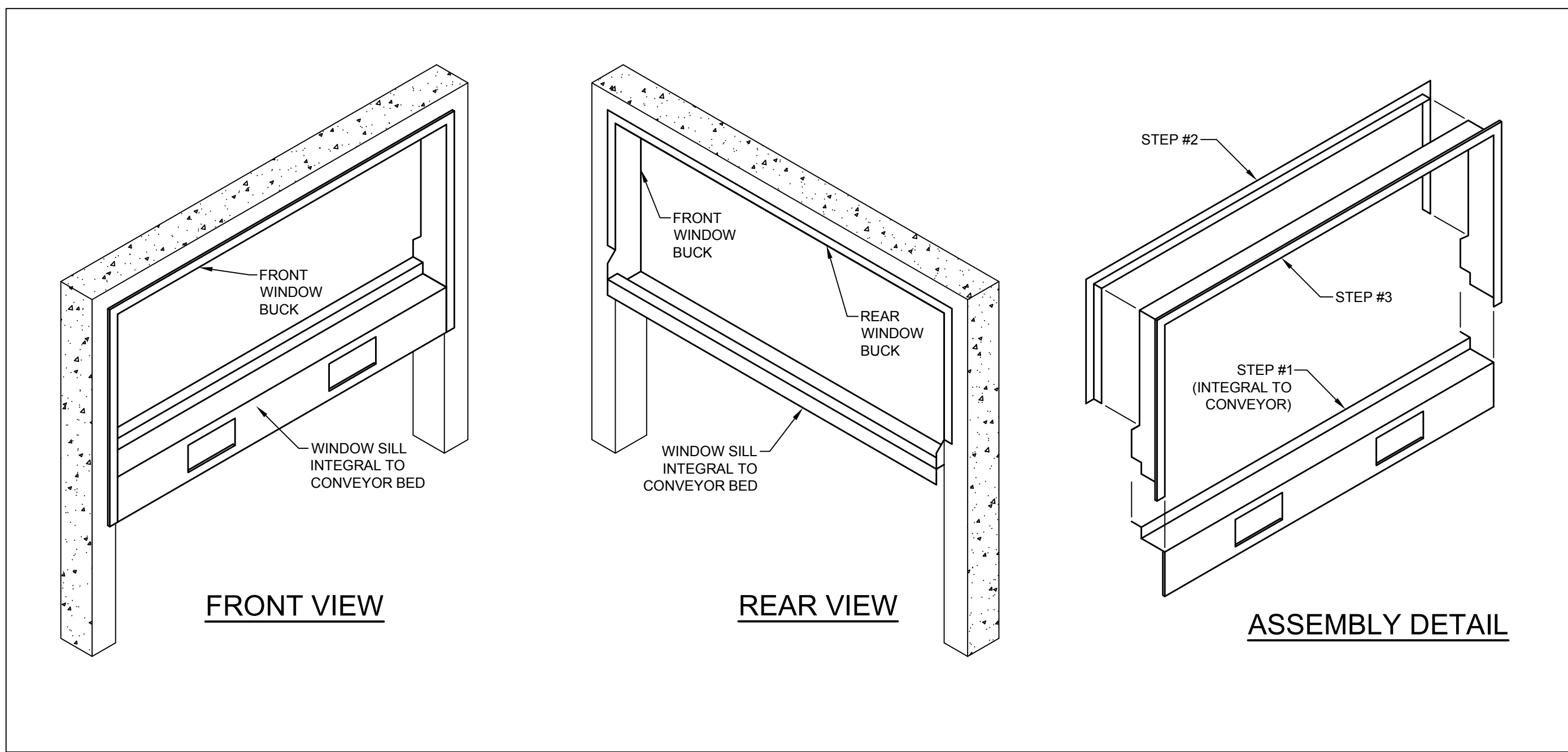
SECTION X-X
SCALE: 1" = 1'-0"



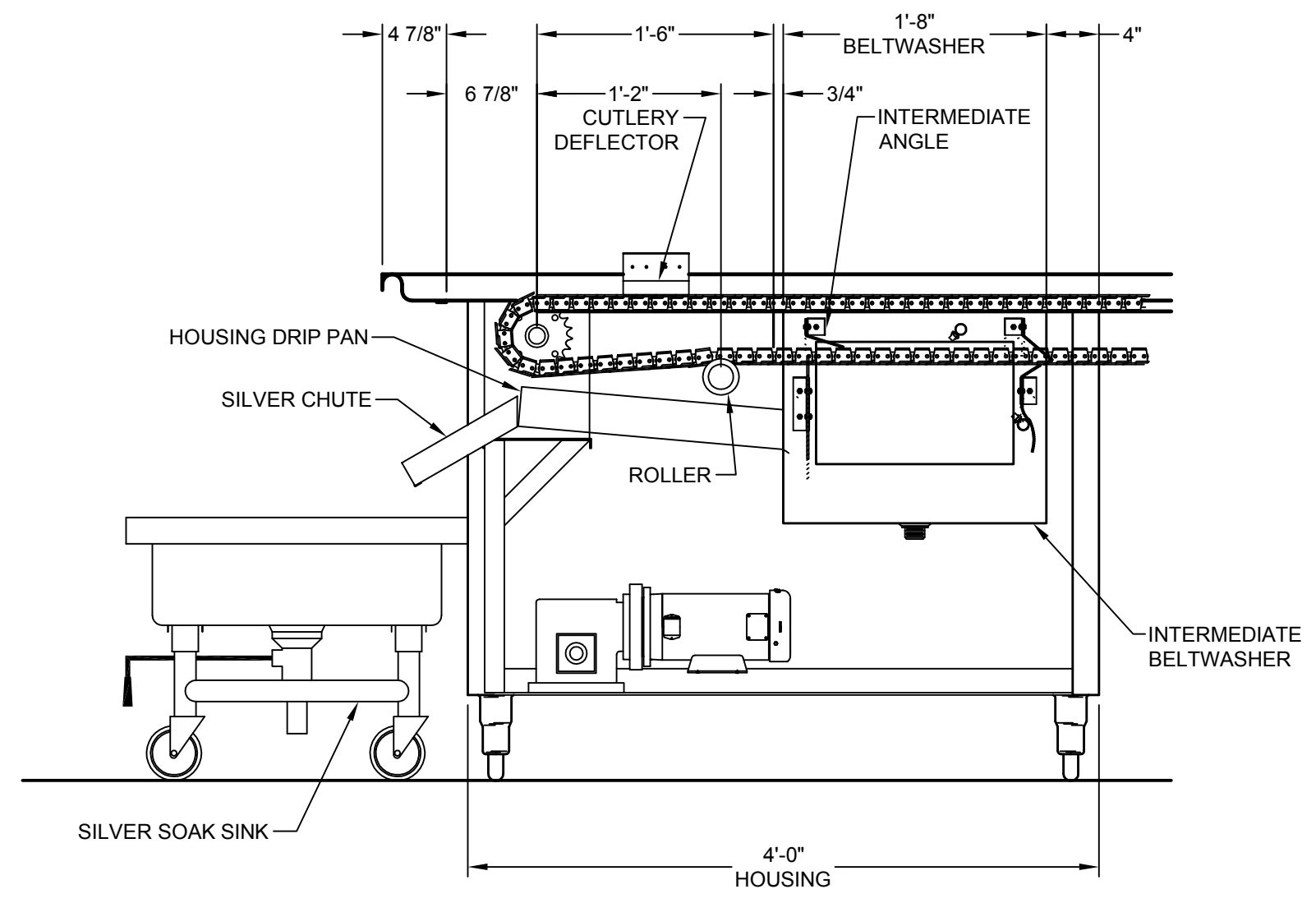
SECTION Y-Y
SCALE: 1" = 1'-0"



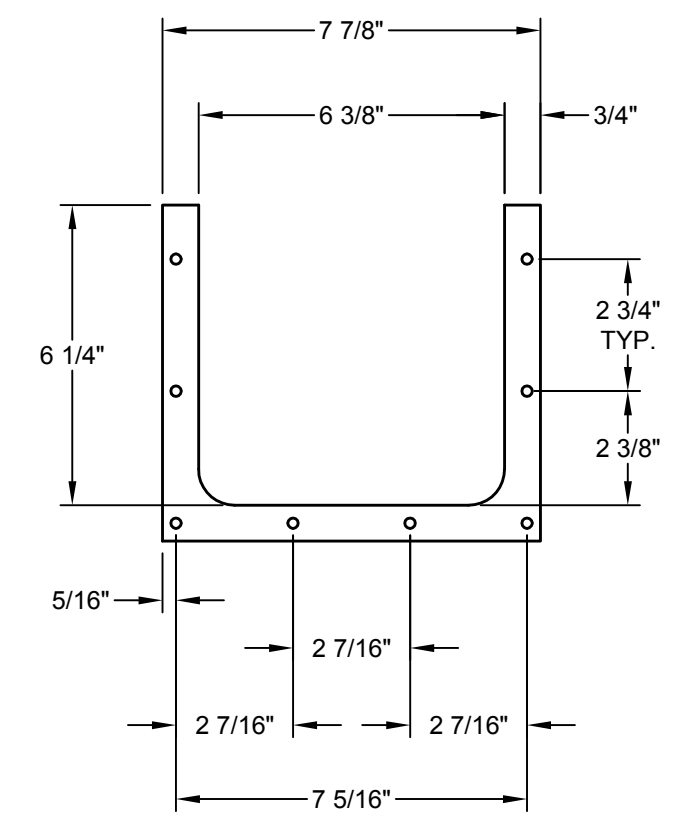
SECTION Z-Z
SCALE: 1" = 1'-0"



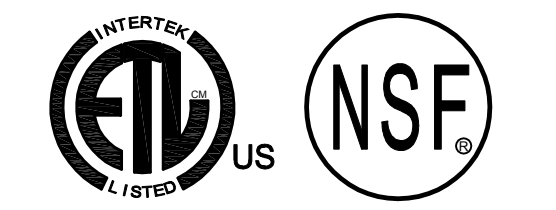
WINDOW BUCK DETAIL
SCALE: NONE



SECTION B-B
SCALE: 1" = 1'-0"



PULPER FLANGE DETAIL
SCALE: 3" = 1'-0"



REVISIONS			
REV	DATE	BY	REMARKS
A	12/18/14	DME	CHANGED LIGHTS TO BE LED AND ADDED TRASH CHUTES AND LAMINATED PANELS.
B	02/10/15	DME	CHANGED WINDOW BUCK TO TELESCOPING & ADDED WINDOW BUCK DETAIL PER KEN IVERSEN.
C	06/09/15	MED	REVISED PER PURCHASE ORDER.
D	06/16/15	DME	REVISED PER CADDY FIELD DIMENSIONS AND SITE VISIT.
E	07/06/15	DME	REVISED PER "APPROVED AS NOTED" DRAWING FOR FABRICATION.

CADDY CORPORATION 509 SHARPTOWN ROAD, P.O. BOX 345 BRIDGEPORT, NJ 08014 TEL: (856) 467-4222 FAX: (856) 467-5511 WWW.CADDYCORP.COM	
EQUIPMENT SCHEDULE	
CF-10-TL SOILED WARES CONVEYOR (TRAY-LESS)	
CADDY NO. 13341-1	ITEM NO. 1
JOB: RUTGERS UNIVERSITY - BROWER LOC: NEW BRUNSWICK, NJ CUST: PENN JERSEY PAPER COMPANY CUST #: 446178	

DATE	12/04/14	SCALE	AS NOTED
DR BY	DME	APPD BY	BPN

DWG# D-1-19734 SHT 2 OF 2

CF-10-TL CONVEYOR IS DESIGNED TO TRANSPORT UP TO 11" DIA. PLATES, CUPS, AND CUTLERY.

GENERAL CONTRACT CONDITIONS
 ELECTRICAL WORK DONE BY CADDY CORPORATION IS EXECUTED IN COMPLIANCE WITH STANDARDS PUBLISHED BY THE UNDERWRITER'S LABORATORIES, INC. INSOFAR AS APPLICABLE, AND THE LATEST EDITION OF THE NATIONAL ELECTRICAL CODE (NEC). CADDY CORPORATION DOES NOT ACCEPT ANY RESPONSIBILITY FOR THE REQUIREMENTS OF ANY REGIONAL AND/OR LOCAL CODES THAT ADD OR DEVIATE FROM THE ACCEPTED STANDARDS OF THE ABOVE AGENCIES. ANY FIELD WORK RELATING TO THE MODIFICATION OF ELECTRIC OR PLUMBING SYSTEMS, TO MEET REGIONAL OR LOCAL CODE REQUIREMENTS IS TO BE DONE BY OTHERS AND WITHOUT BACK CHARGES TO CADDY CORPORATION, UNLESS THESE CONDITIONS WERE PREVIOUSLY BROUGHT TO OUR ATTENTION AND ARE EXPRESSLY INCLUDED IN OUR WRITTEN QUOTATION. ALL WIRING AND PLUMBING AT THE JOB SITE IS THE RESPONSIBILITY OF OTHERS. EQUIPMENT WILL BE CONSTRUCTED IN ACCORDANCE WITH OUR DRAWING(S) WHICH MUST BE APPROVED PRIOR TO FABRICATION. ANY SUBSEQUENT CHANGES REQUIRED MUST BE SUBMITTED TO US IN WRITING AND ACKNOWLEDGED ON OUR STANDARD FORM.